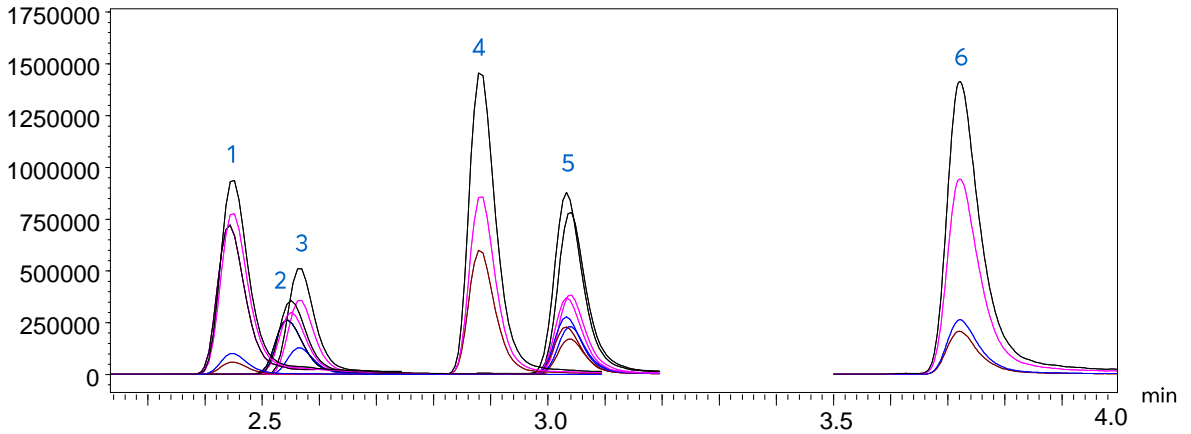


Low Level Determination of Cannabis Use from Hair Samples



1. 11-Hydroxy- Δ^9 -tetrahydrocannabinol (THC-OH)
2. 11-Nor-9-carboxy- Δ^9 -Tetrahydrocannabinol (THC-COOH)
3. Cannabidiol (CBD)
4. Cannabinol (CBN)
5. Tetrahydrocannabinol (THC)
6. Δ^9 -Tetrahydrocannabinolic acid-A (THCA-A)

Method Details

CONDITIONS

Column: ACE Excel 1.7 C18
 Dimensions: 50 x 2.1 mm
 Mobile Phase: A: 0.01 % Acetic acid in H₂O
 B: 0.01 % Acetic acid in MeOH

Gradient:

Time (mins)	%B
0.00	50
0.50	80
2.00	90
4.00	90
4.01	50

Flow Rate: 0.3 mL/min
 Injection: 5 µL
 Temperature: 50 °C
 Detection: Shimadzu 8060 Triple Quad MS
 MRM, positive and negative ESI mode
 Sample: THC and metabolites extracted from human hair using matrix micro pulverization and clean up with supported liquid extraction prior to LC/MS-MS analysis

MS CONDITIONS

Peak	Analyte	Rt (Mins)	MRM Transitions	Ion Mode
1	11-Hydroxy- Δ^9 -tetrahydrocannabinol (THC-OH)	2.44	331.0 > 313.3	+
2	11-Nor-9-carboxy- Δ^9 -Tetrahydrocannabinol (THC-COOH)	2.55	343.3 > 299.3	-
3	Cannabidiol (CBD)	2.56	313.2 > 245.15	-
4	Cannabinol (CBN)	2.88	311.0 > 223.0	+
5	Tetrahydrocannabinol (THC)	3.05	315.0 > 193.1	+
6	Δ^9 -Tetrahydrocannabinolic acid-A (THCA-A)	3.71	357.3 > 313.3	-

Reproduced with permission of Biotage GB Ltd. For sample extraction conditions see Biotage Poster P198. V.2

ORDERING TABLE

Product	Details	Size	Part Number
ACE Excel 1.7 C18	UHPLC Column	50 x 2.1 mm	EXL-171-0502U