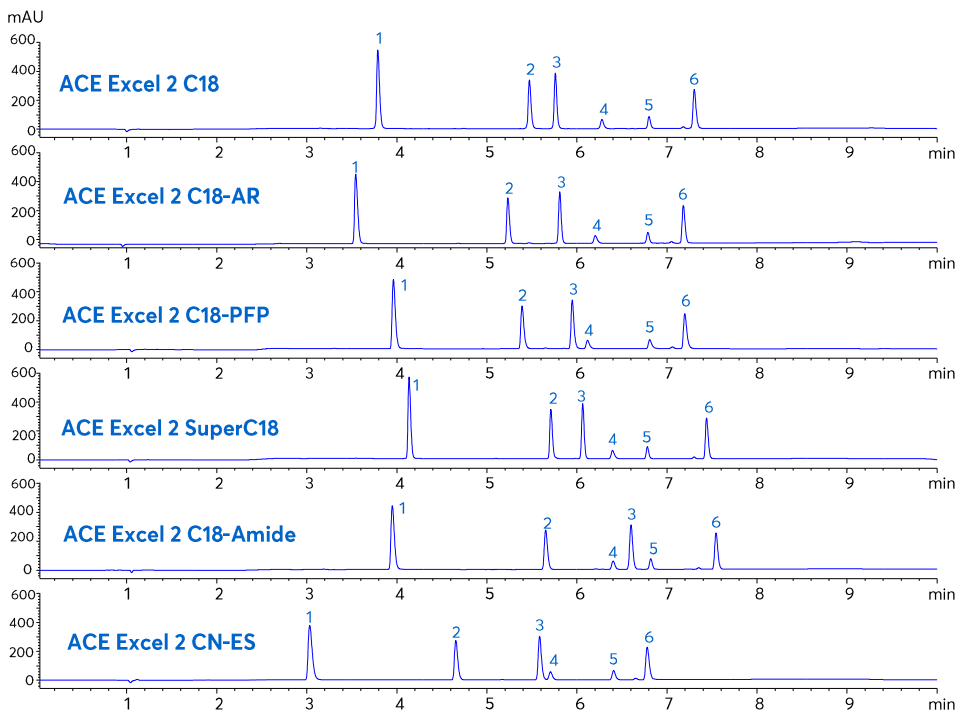


Application note #6960

Peptide Six-Column Screen



Method Details

CONDITIONS

Columns: Avantor® ACE® Excel 2 C18, C18-AR, C18-PFP, SuperC18, C18-Amide, CN-ES

Dimensions: 100 x 3.0 mm

Mobile Phases: A: 0.05 % TFA in H₂O
B: 0.05 % TFA in MeCN

Gradient:

Time (mins)	%B
0	5
1	5
8	40
9	40
9.5	5
15	5

Flow Rate: 0.6 mL/min

Injection: 2 µL

Temperature: 22 °C

Detection: UV, 220 nm

ORDERING TABLE

Product	Details	Size	Part number
Avantor® ACE® Excel 2 C18	UHPLC Column	100 x 3.0 mm	EXL-101-1003U
Avantor® ACE® Excel 2 C18-AR	UHPLC Column	100 x 3.0 mm	EXL-109-1003U
Avantor® ACE® Excel 2 C18-PFP	UHPLC Column	100 x 3.0 mm	EXL-1010-1003U
Avantor® ACE® Excel 2 SuperC18	UHPLC Column	100 x 3.0 mm	EXL-1011-1003U
Avantor® ACE® Excel 2 C18-Amide	UHPLC Column	100 x 3.0 mm	EXL-1012-1003U
Avantor® ACE® Excel 2 CN-ES	UHPLC Column	100 x 3.0 mm	EXL-1013-1003U
Acetonitrile	VWR CHROMANORM® gradient grade	2.5 L	83639.320
Water	VWR CHROMANORM® gradient grade	2.5 L	83650.320
Trifluoroacetic acid	VWR HiPerSolv CHROMANORM® for LC/MS	10 x 1 mL	85049.001