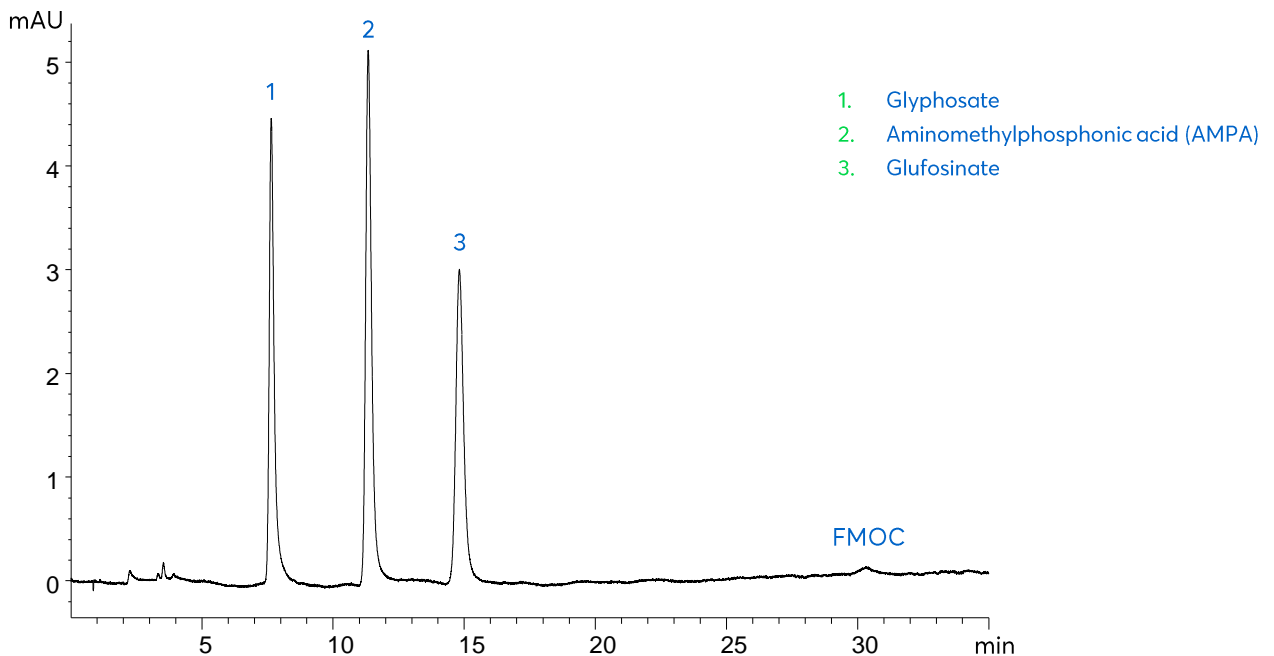


Application note #3860

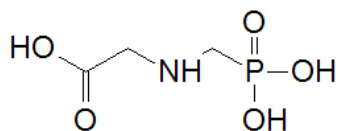
Glyphosate and Related Compounds as FMOC Derivatives (Isocratic)



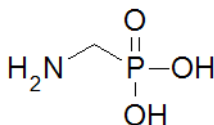
Method Details

CONDITIONS

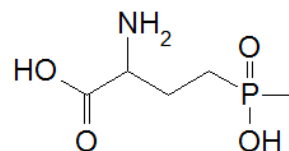
Column:	Avantor® ACE® Excel 3 SuperC18
Dimensions:	150 x 2.1 mm
Mobile Phase:	5 mM ammonium formate pH 3.0 in H ₂ O/MeOH (55:45 v/v)
Flow Rate:	0.4 mL/min
Injection:	0.1 µL
Temperature:	25 °C
Detection:	UV, 254 nm
Sample:	Standards derivatised with FMOC-Cl



Glyphosate



Aminomethylphosphonic acid (AMPA)



Glufosinate

ORDERING TABLE

Product	Details	Size	Part Number
Avantor® ACE® Excel 3 SuperC18	HPLC column	150 x 2.1 mm	EXL-1111-1502U
Methanol	VWR CHROMANORM® gradient grade	2.5 L	20864.320
Water	VWR CHROMANORM® gradient grade	2.5 L	83650.320
Ammonium formate	VWR CHROMANORM® for LC-MS	100 g	84884.180